

Supplementary Material

Limited Association Between Ascorbate Concentrations and Vitamin C Transporters in Renal Cell Carcinoma Cells and Clinical Samples

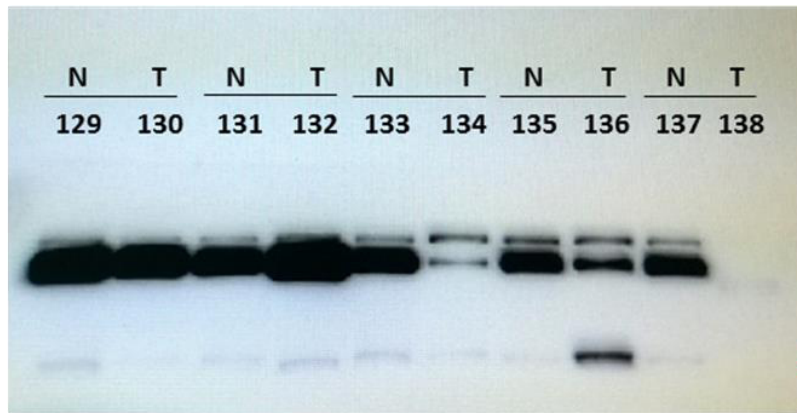
Christina Wohlrab^{a,b} Margreet C.M. Vissers^c Eleanor R. Burgess^a
Maria Nonis^a Elisabeth Phillips^a Bridget A. Robinson^{a,d} Gabi U. Dachs^a

^aMackenzie Cancer Research Group, Department of Pathology and Biomedical Science, University of Otago, Christchurch, New Zealand, ^bFianostics GmbH, Technologie- und Forschungszentrum, Wiener Neustadt, Austria, ^cCentre for Free Radical Research, Department of Pathology and Biomedical Science, University of Otago, Christchurch, New Zealand, ^dCanterbury Regional Cancer and Hematology Service, Canterbury District Health Board, Christchurch, New Zealand

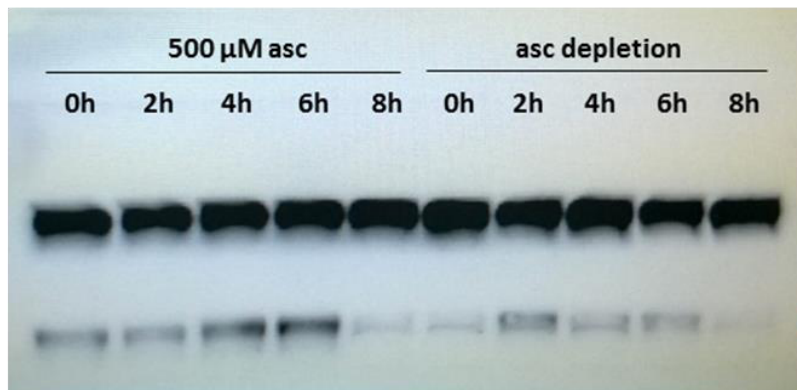
Supplementary Figure 1. Full size Western blots of clinical and *in vitro* samples for SVCT1(A) and repeat blots for SVCT1 and SVCT2 (B).

A

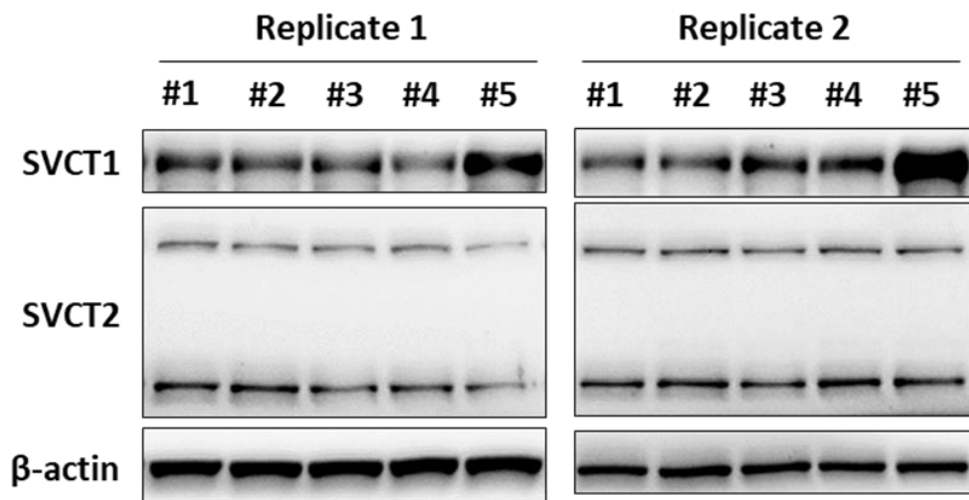
Clinical samples



Cell lines



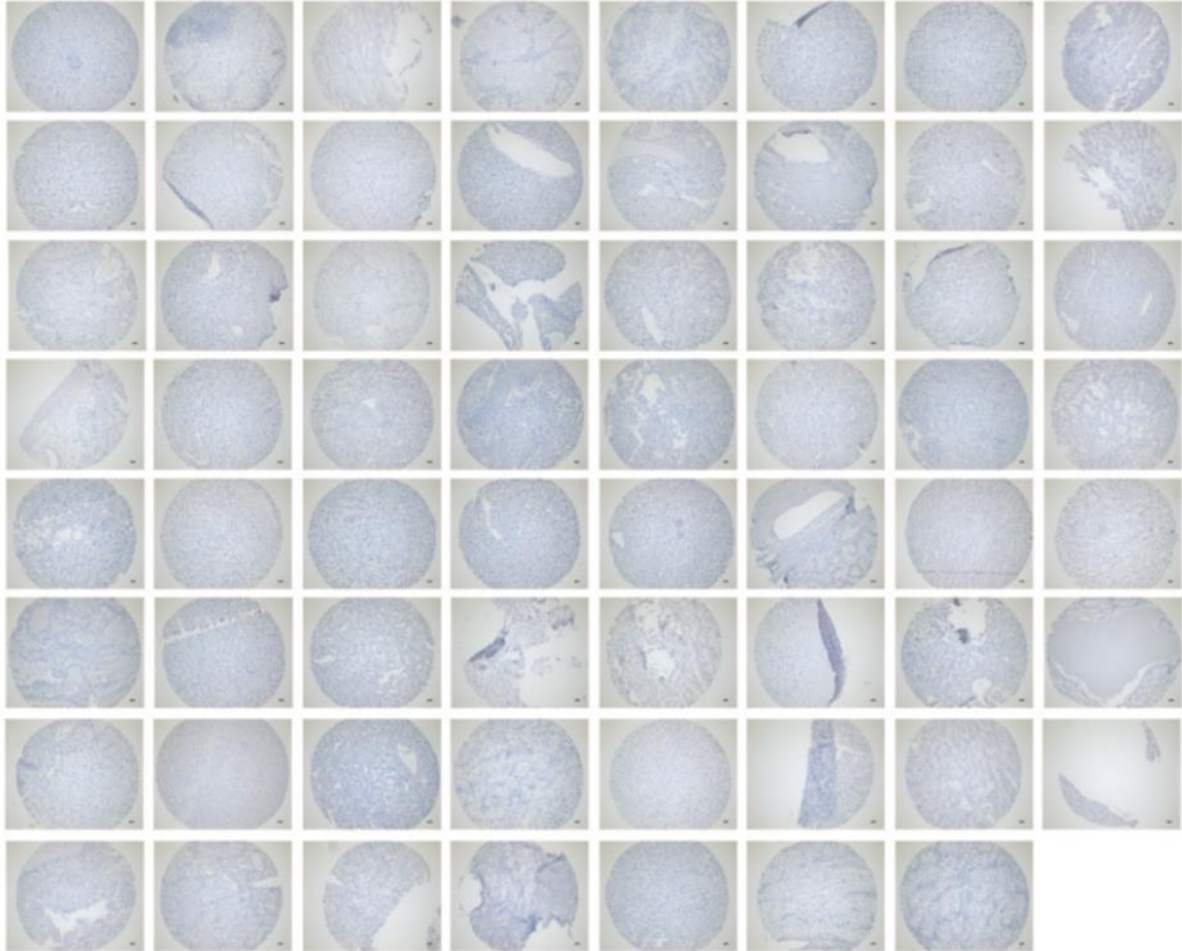
B



Supplementary Figure 2. Tissue microarrays of RCC tumours. Negative control (A), staining for SVCT1 (B), staining for SVCT2 (C).

A

Negative control



B

SVCT1



C

SVCT2

