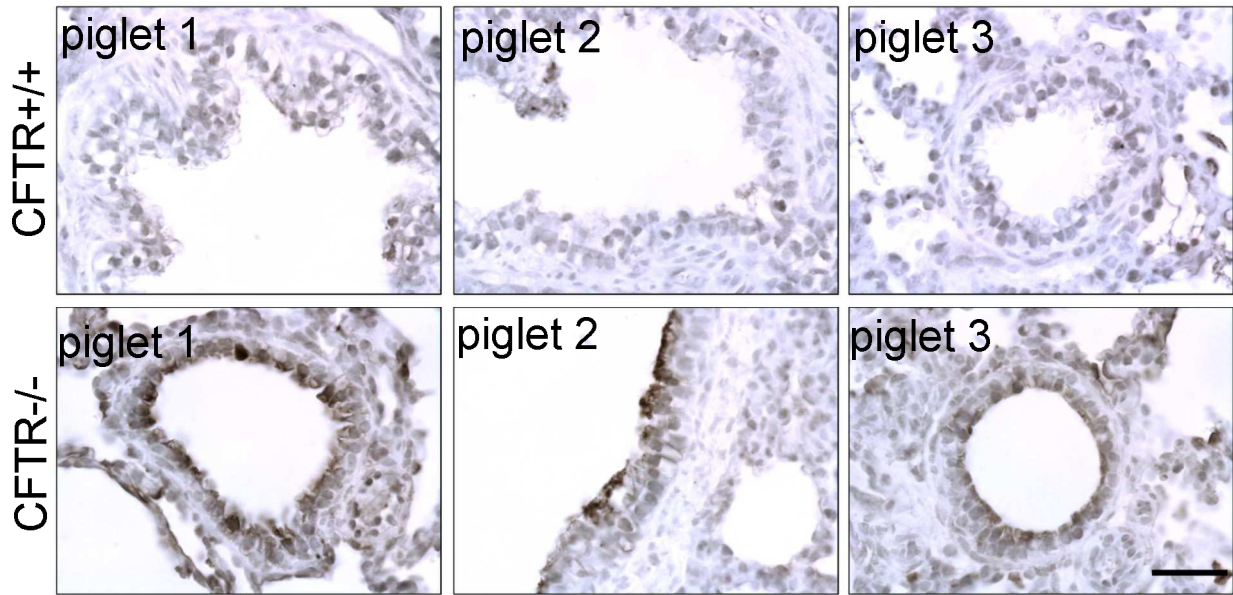


Supplementary Material

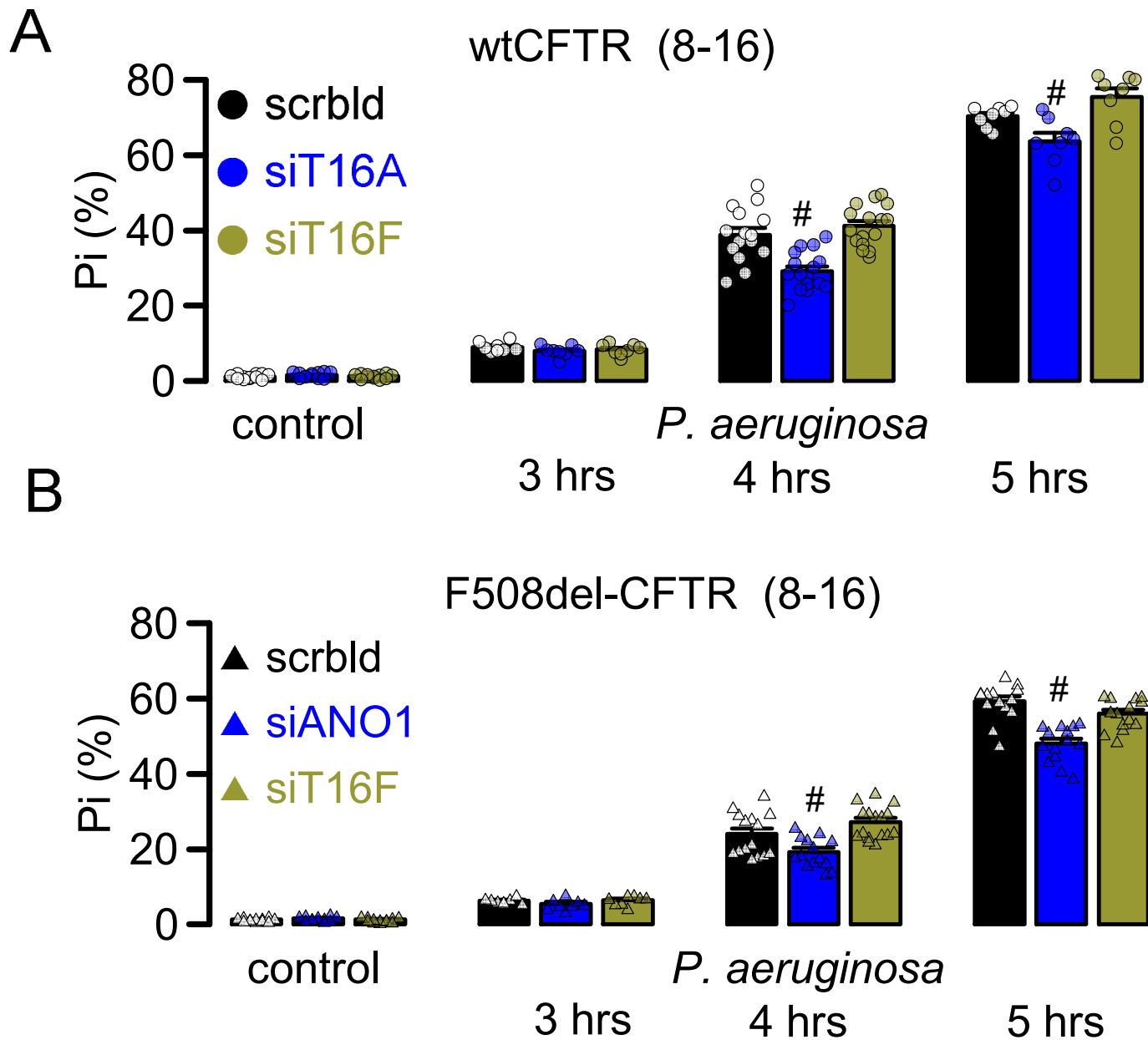
***P. aeruginosa* Induced Lipid Peroxidation Causes Ferroptotic Cell Death in Airways**

Jiraporn Ousingsawat^a Rainer Schreiber^a Erich Gulbins^b Markus Kamler^c
Karl Kunzelmann^a

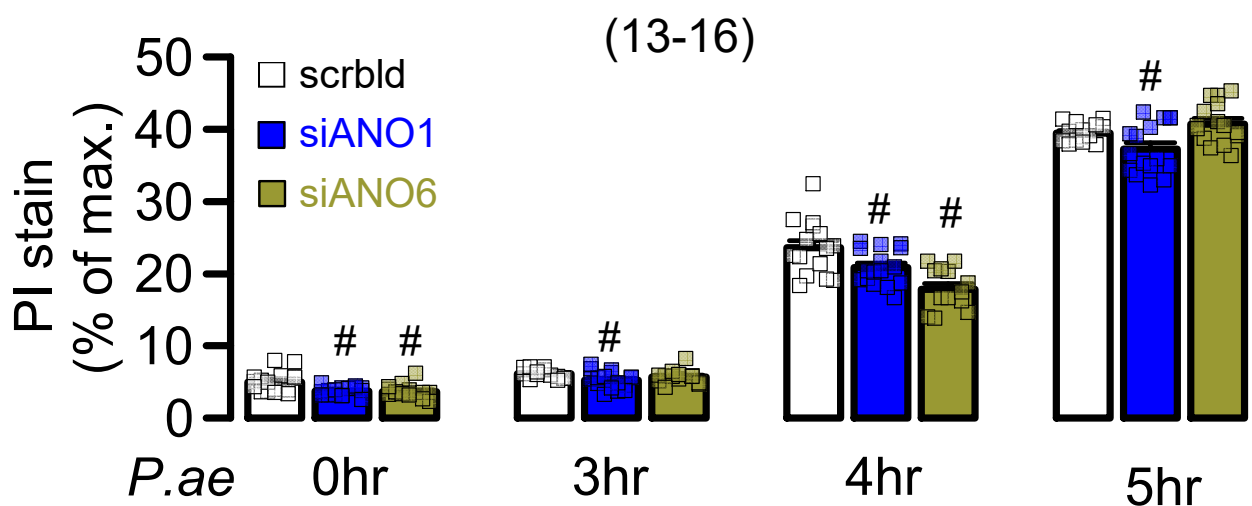
^aInstitut für Physiologie, Universität Regensburg, Regensburg, Germany, ^bInstitute of Molecular Biology, University of Duisburg-Essen, Medical School Essen, Essen, Germany, ^cDepartment of Thoracic and Cardiovascular Surgery, Division of Thoracic Transplantation, University Hospital Essen, Essen, Germany



Supplementary Figure 1. *Lipid peroxidation in airways of CFTR^{-/-} but not CFTR^{+/+} piglets.* Lipid peroxidation was detected in airways of newborn CFTR^{-/-} piglets, but was not detectable in airways of wild type (CFTR^{+/+}) piglets. Lipid peroxidation was detected by 4HNE staining (dark precipitations). Bar indicates 50 μ m.



Supplementary Figure 2. *Knockdown of TMEM16A but not of TMEM16F inhibits cell death induced by P. aeruginosa in CFBE airway epithelial cells.* CFBE airway epithelial cells stably expressing wtCFTR (A) or F508del-CFTR (B) were exposed for up to 5 hrs to *P. aeruginosa*, which induced cell death in both cell lines. Cell death was assessed by propidium iodide (Pi) staining. Knockdown of TMEM16A but not of TMEM16F inhibited cell death induced by *P. aeruginosa*. The missing effect of si-TMEM16F might also be due to very low levels of TMEM16F, which could not be detected by Western blotting. Mean \pm SEM (number of assays). #significant difference when compared to scrbld (ANOVA; $p < 0.05$).



Supplementary Figure 3. Knockdown of TMEM16A and maybe of TMEM16F inhibits cell death induced by *P. aeruginosa* in Calu3 airway epithelial cells. Calu3 airway epithelial cells were exposed for up to 5 hrs to *P. aeruginosa*, which induced cell death in both cell lines. Cell death was assessed by propidium iodide (PI) staining. Knockdown of TMEM16A and of TMEM16F (at time point 4 hrs) inhibited cell death induced by *P. aeruginosa*. Mean \pm SEM (number of assays). #significant difference when compared to scrbld (ANOVA; $p < 0.05$).