

Supplementary Material

Interleukin-33 Deficiency Exacerbates Bone Loss Associated with *Porphyromonas Gingivalis*- Induced Experimental Periodontitis in Female Mice

Agathe Louisy^a Valérie Geoffroy^a Boris Halgand^a Olivier Lapérine^a
Joëlle Veziers^a Jocelyne Caillon^b Jérôme Guicheux^a Philippe Lesclous^a
Alexandra Cloitre^a

^aNantes Université, Oniris, Univ Angers, CHU Nantes, INSERM, Regenerative Medicine and Skeleton, RMeS, UMR 1229, Nantes, France, ^bEA 3826 Thérapeutiques cliniques et expérimentales des infections, Nantes, France

Supplemental table

Table S1. Bone phenotype of 15- to 16-week-old WT and IL-33 KO mice. Microcomputed tomography (micro-CT) analyses were performed of the maxillary bone, femur, and fifth lumbar vertebra. The percentage of trabecular bone/total volume (BV/TV), trabecular thickness (Tb.Th), trabecular separation (Tb.Sp), trabecular number (Tb.N), and bone mineral density (BMD) in WT and IL-33 KO mice are presented. Data are shown as mean \pm SD. $n \geq 5$ per group; * $p < 0.05$. (Student *t* test).

		Males			Females		
		WT	IL-33 KO	<i>p</i> value	WT	IL-33 KO	<i>p</i> value
Maxillae	Tb.Th (mm)	0.20 \pm 0.01	0.22 \pm 0.01	0.0260*	0.22 \pm 0.22	0.24 \pm 0.01	0.0159*
	Tb.Sp (mm)	0.47 \pm 0.02	0.44 \pm 0.02	0.0931	0.48 \pm 0.06	0.45 \pm 0.03	0.2222
	Tb.N (1/mm)	1.36 \pm 0.01	1.44 \pm 0.06	0.1797	1.34 \pm 0.03	1.35 \pm 0.05	1.0000
	BMD (mg/cm ³)	1.24 \pm 0.14	1.23 \pm 0.11	1.0000	1.18 \pm 0.06	1.21 \pm 0.05	0.5476
Femur	Tb.Th (mm)	0.05 \pm 0.04	0.05 \pm 0.00	0.6991	0.05 \pm 0.01	0.05 \pm 0.00	0.6905
	Tb.Sp (mm)	0.23 \pm 0.01	0.24 \pm 0.02	0.5887	0.34 \pm 0.04	0.35 \pm 0.01	0.6905
	Tb.N (1/mm)	1.99 \pm 0.34	1.94 \pm 0.42	0.9372	0.78 \pm 0.26	0.75 \pm 0.85	1.0000
	BMD (mg/cm ³)	0.87 \pm 0.04	0.95 \pm 0.06	0.0370*	0.97 \pm 0.58	1.02 \pm 0.06	0.3457
5 th lumbar vertebrae	Tb.Th (mm)	0.08 \pm 0.01	0.09 \pm 0.00	0.2403	0.09 \pm 0.01	0.10 \pm 0.00	0.0159*
	Tb.Sp (mm)	0.35 \pm 0.11	0.33 \pm 0.13	0.1797	0.38 \pm 0.01	0.36 \pm 0.02	0.4206
	Tb.N (1/mm)	2.69 \pm 0.17	2.93 \pm 0.22	0.0649	2.44 \pm 0.02	2.45 \pm 0.27	1.0000
	BMD (mg/cm ³)	0.76 \pm 0.03	0.80 \pm 0.02	0.0295*	0.83 \pm 0.61	0.86 \pm 0.03	0.6905

Supplemental figure

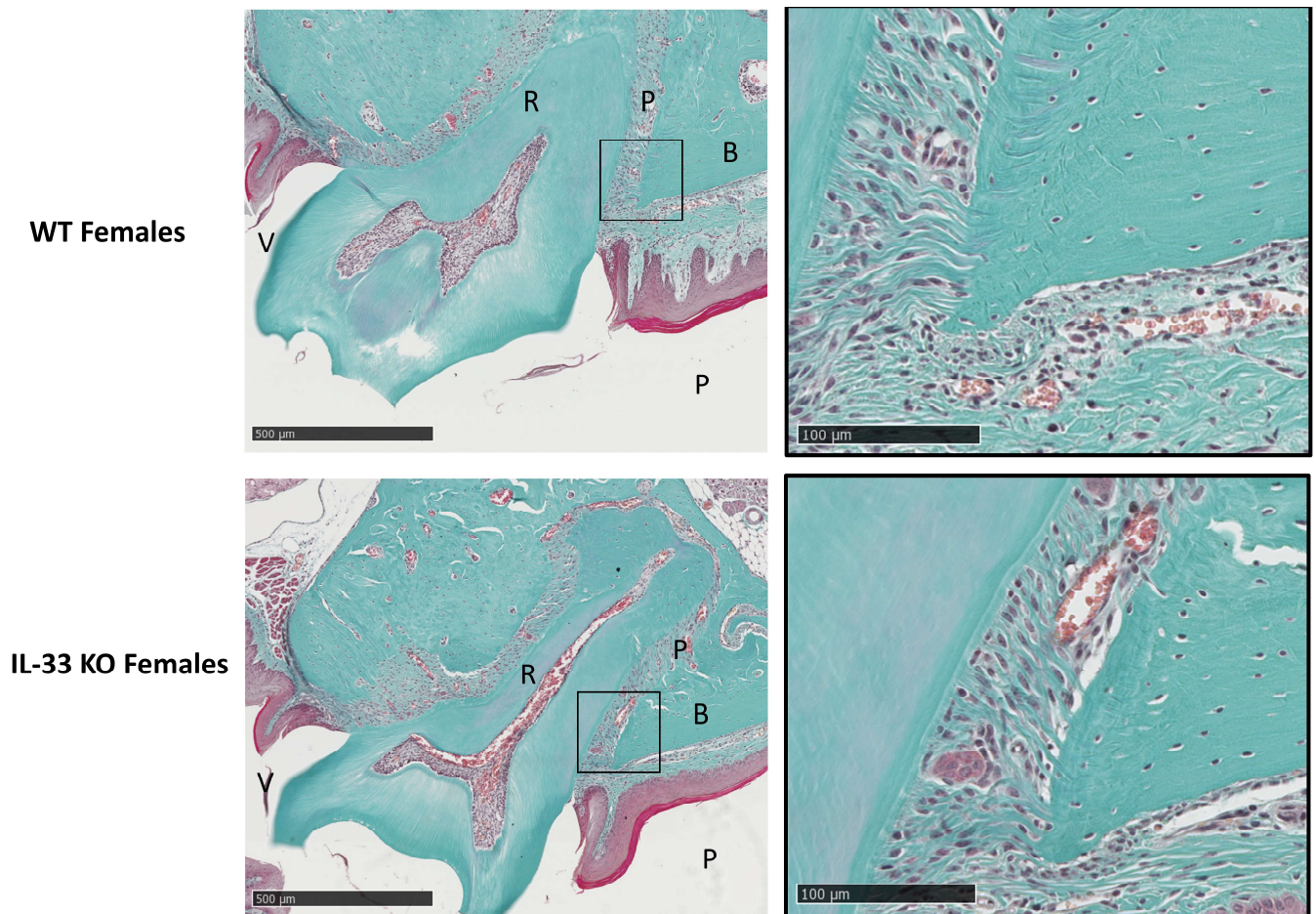


Figure S1. Representative histological section of maxillae from female IL-33KO and WT mice stained with Masson's trichrome. V: vestibular side, R: root of the tooth, P: periodontal ligament, B: Bone, P: palatal side, scale bar = 500 μm and = 100 μm.