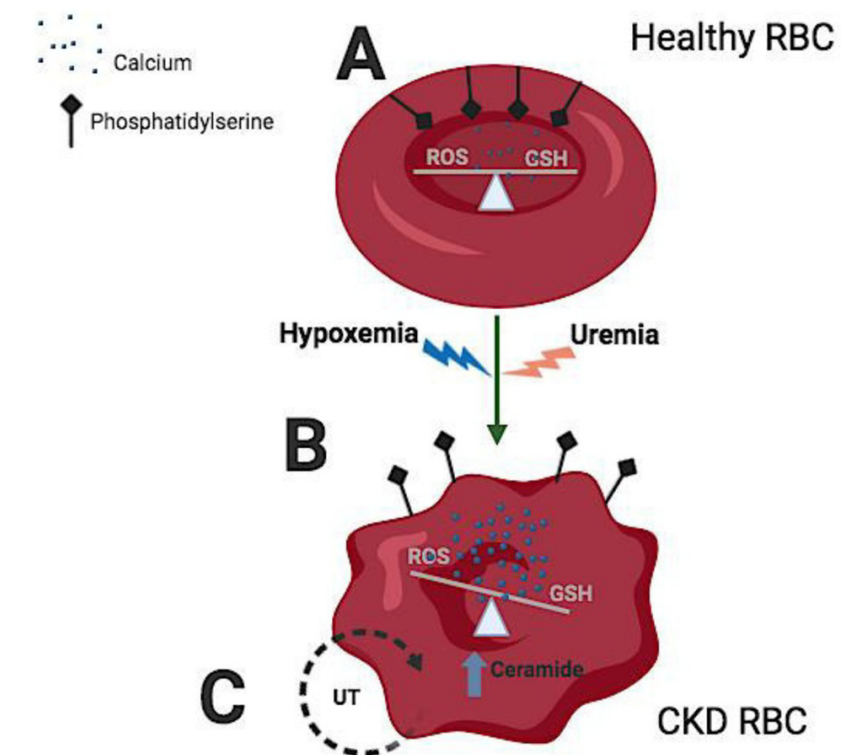


- 747 **Autophagy Precedes Apoptosis in Angiotensin II-Induced Podocyte Injury**
Seong S. (Cheongju), Ha D. (Daejeon), Min S. (Cheongju), Ha T. (Cheongju)
- 760 **Dicer Sequencing, Whole Genome Methylation Profiling, mRNA and smallRNA Sequencing Analysis in Basal Cell Carcinoma**
Sand M. (Bochum; Essen), Bromba A. (Bochum), Sand D. (Los Angeles), Gambichler T. (Bochum), Hessam S. (Bochum), Becker J. (Essen; Heidelberg), Stockfleth E. (Bochum), Meyer T. (Bochum), Bechara F. (Bochum)
- 774 **Autophagy: A Novel Mechanism Involved in the Anti-Inflammatory Abilities of Probiotics**
Zaylaa M. (Lille; Tripoli), Alard J. (Lille), Kassaa I. (Tripoli), Peucelle V. (Lille), Boutillier D. (Lille), Desramaut J. (Lille), Rosenstiel P. (Kiel), Nguyen H. (Clermont-Ferrand), Dabboussi F. (Tripoli), Pot B. (Lille), Granette C. (Lille)
- 794 **Uremia and Hypoxia Independently Induce Eryptosis and Erythrocyte Redox Imbalance**
Tozoni S. (Paraná), Dias G. (Paraná), Bohnen G. (Paraná), Grobe N. (New York), Pecoito-Filho R. (Paraná), Kotanko P. (New York), Moreno-Amaral A. (Paraná)
- 805 **EGFR is a Therapeutic Target in Hormone Receptor-Positive Breast Cancer**
Jeong Y. (Seoul), Bae S. (Seoul), You D. (Seoul), Jung S. (Seoul), Choi H. (Seoul), Kim I. (Seoul), Lee S. (Seoul), Yu J. (Seoul), Kim S. (Seoul), Lee J. (Seoul), Kim S. (Seoul), Nam S. (Seoul)
- 820 **Clinical Evidence on the Interaction Between MLK4, KRAS and Microsatellite Instability to Determine the Prognosis of Early-Stage Colorectal Carcinoma**
Brandl L. (Munich), Horst D. (Berlin; Heidelberg), Grünewald T. (Munich; Heidelberg), Mayerle J. (Munich), Sendelhofert A. (Munich), Neumann J. (Munich), Kirchner T. (Munich; Heidelberg), De Toni E. (Munich)
- 832 **Htra1 is a Novel Transcriptional Target of RUNX2 That Promotes Osteogenic Differentiation**
Iyyanar P. (Saskatoon), Thangaraj M. (Saskatoon), Eames B. (Cincinnati), Nazarali A. (Saskatoon)
- 851 **Expression of Growth and Hunger Related Genes and Physio-Biochemical Responses in *Labeo rohita* (Hamilton, 1822) Fed with Lysine and Betaine**
Dar S. (Mumbai), Srivastava P. (Mumbai), Varghese T. (Mumbai), Gupta S. (Mumbai), Krishna G. (Mumbai), Nuzaba P. (Mumbai), Laya T. (Mumbai)
- 865 **Empagliflozin and Dapagliflozin Reduce ROS Generation and Restore NO Bioavailability in Tumor Necrosis Factor α -Stimulated Human Coronary Arterial Endothelial Cells**
Uthman L. (Amsterdam), Homayr A. (Amsterdam; Kiel), Juni R. (Amsterdam), Spin E. (Amsterdam), Kerindongo R. (Amsterdam), Boomsma M. (Amsterdam), Hollmann M. (Amsterdam), Preckel B. (Amsterdam), Koolwijk P. (Amsterdam), Hinsbergh V. (Amsterdam), Zuurbier C. (Amsterdam), Albrecht M. (Kiel), Weber N. (Amsterdam)
- 887 **Inflammatory Microenvironment of Acute Myocardial Infarction Prevents Regeneration of Heart with Stem Cells Therapy**
Khodayari S. (Tehran; Cologne/Düsseldorf; Düsseldorf), Khodayari H. (Tehran; Cologne/Düsseldorf; Düsseldorf), Amiri A. (Winnipeg), Eslami M. (Tehran), Farhud D. (Tehran), Hescheler J. (Cologne/Düsseldorf; Cologne), Nayernia K. (Cologne/Düsseldorf; Düsseldorf; Tehran)

Cellular Physiology and Biochemistry

International Journal of
Experimental Cellular Physiology, Biochemistry and Pharmacology



Cover illustration

Uremia and Hypoxia Independently Induce Eryptosis and Erythrocyte Redox Imbalance. See Original by Tozoni, et al. in Cell Physiol Biochem 2019;53:794-804.