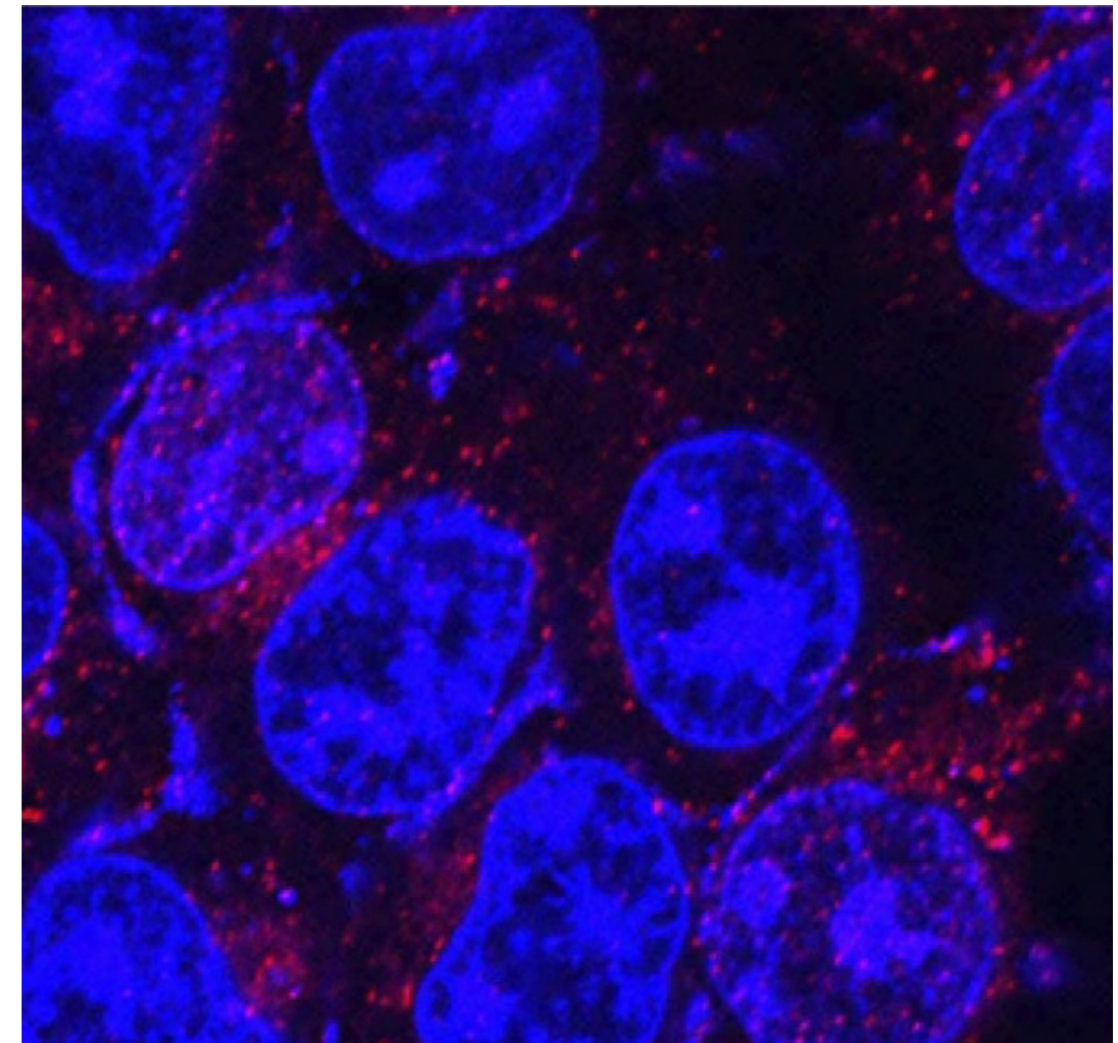


Cellular Physiology and Biochemistry

- 141 **SUMO-Modification of Human Nrf2 at K¹¹⁰ and K⁵³³ Regulates Its Nucleocytoplasmic Localization, Stability and Transcriptional Activity**
Walters T. (Nashville), McIntosh D. (Nashville), Ingram S. (Nashville), Tillery L. (Nashville), Motley E. (Nashville), Arinze I. (Nashville), Misra S. (Nashville)
- 160 **Physiological and Biochemical Changes in NRF2 Pathway in Aged Animals Subjected to Brain Injury**
Cordaro M. (Messina), D'Amico R. (Messina), Morabito R. (Messina), Fusco R. (Messina), Siracusa R. (Messina), Peritore A. (Messina), Impellizzeri D. (Messina), Genovese T. (Messina), Crupi R. (Messina), Gugliandolo E. (Messina), Marino A. (Messina), Paola R. (Messina), Cuzzocrea S. (Messina; Saint Louis)
- 180 **RhoG-Rac1 Signaling Pathway Mediates Metabolic Dysfunction of the Pancreatic Beta-Cells Under Chronic Hyperglycemic Conditions**
Chundru S. (Detroit), Harajli A. (Detroit), Hali M. (Detroit), Gleason N. (Detroit), Gamage S. (Detroit), Kowluru A. (Detroit)
- 193 **Elaborating the Physiological Role of YAP as a Glucose Metabolism Regulator: A Systematic Review**
Sanjaya A. (Bandung), Goenawan H. (Bandung), Setiawan I. (Bandung), Gunadi J. (Bandung), Limiyati Y. (Bandung), Lesmana R. (Bandung)
- 206 **Disaccharides-Based Cryo-Formulant Effect on Modulating Phospho/Mitochondrial Lipids and Biological Profiles of Human Leukaemia Cells**
Straka M. (Cambridge), Al-Otaibi N. (Cambridge; Riyadh), Whitfield P. (Inverness), Doherty M. (Inverness), Matarèse B. (Cambridge), Slater N. (Cambridge), Rahmoune H. (Cambridge)
- 222 **Sphingosine-1-Phosphate Contributes to TLR9-Induced TNF- α Release in Lung Tumor Cells**
Terlizzi M. (Fisciano), Colarusso C. (Fisciano), Ferraro G. (Fisciano), Monti M. (Fisciano), Cerqua I. (Naples), Roviezzo F. (Naples), Pinto A. (Fisciano), Sorrentino R. (Fisciano)
- 235 **Errata**
- 239 **Retraction Statements**

Cellular Physiology and Biochemistry

International Journal of
Experimental Cellular Physiology, Biochemistry and Pharmacology



Cover Illustration

SUMO-Modification of Human Nrf2 at K¹¹⁰ and K⁵³³ Regulates Its Nucleocytoplasmic Localization, Stability and Transcriptional Activity. See Original by Walters et al. in Cell Physiol Biochem 2021;55:141-159.